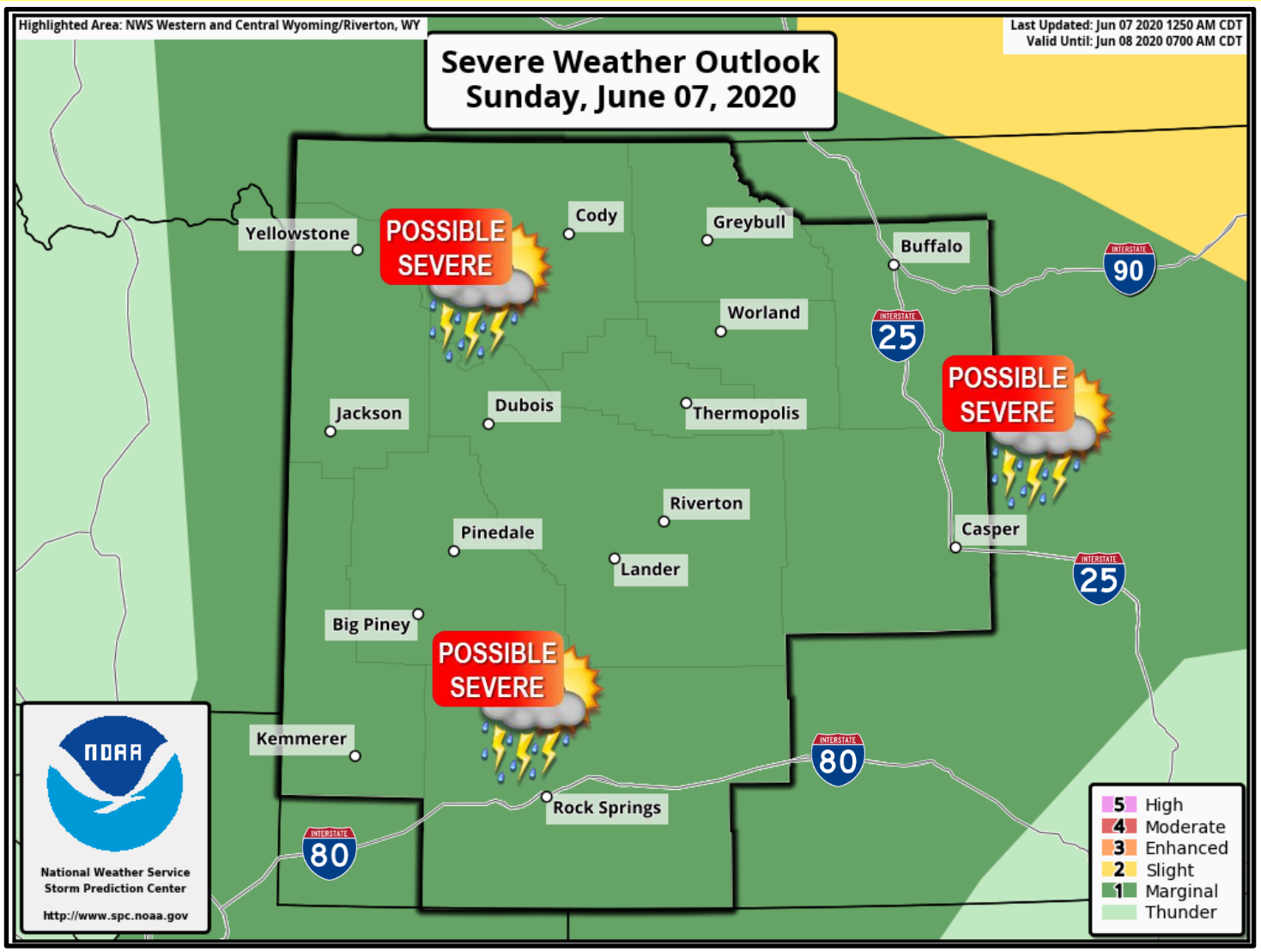




# Severe Thunderstorm Outlook Today



## Severe Weather Message of the Day:

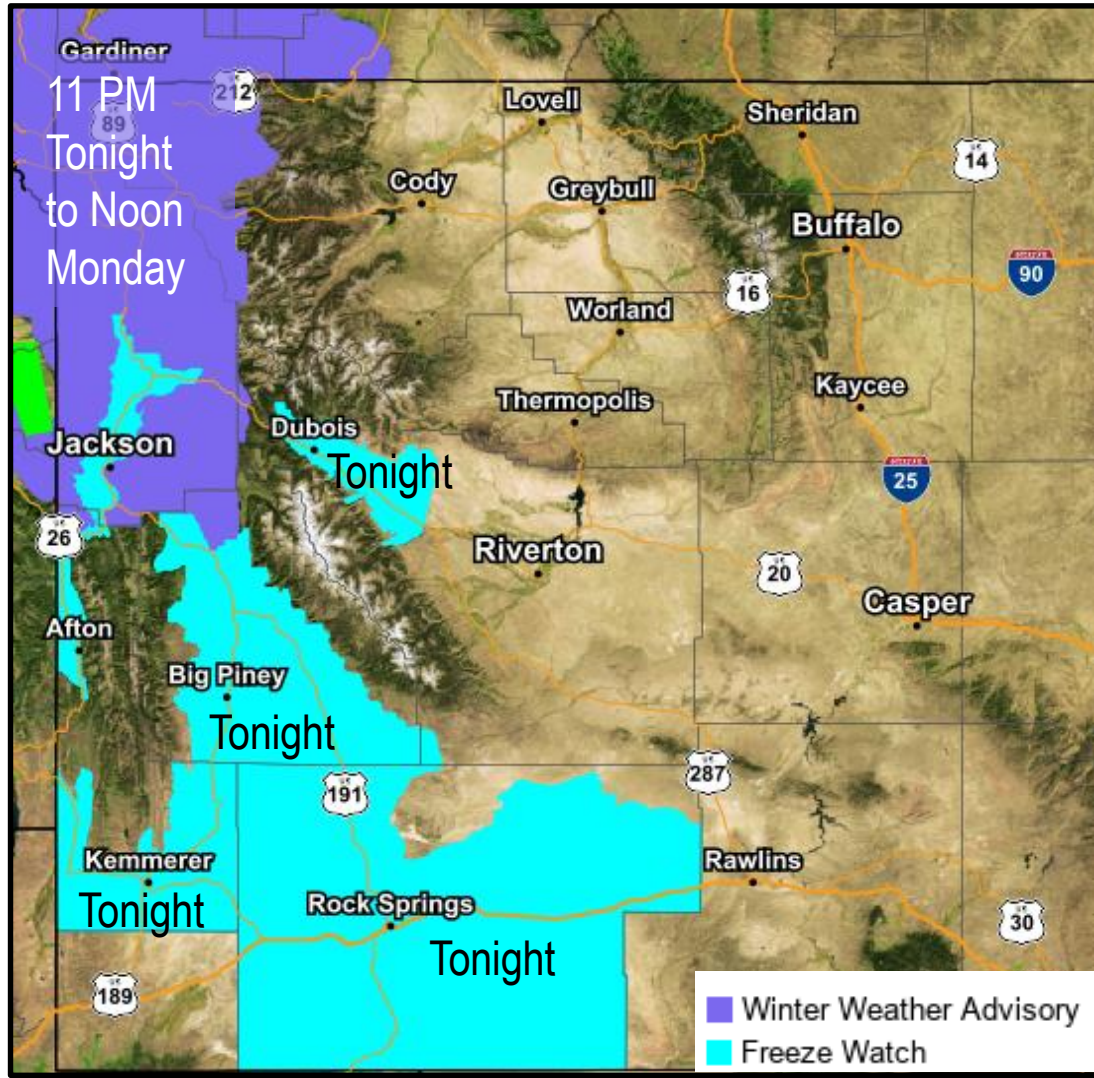
**What:** Widely scattered strong to severe thunderstorms. Damaging Wind is the main hazard

**When:** Afternoon & Evening

**Where:** The Entire Area



# Winter Weather Tonight & Monday Morning



## Winter Weather Message of the Day:

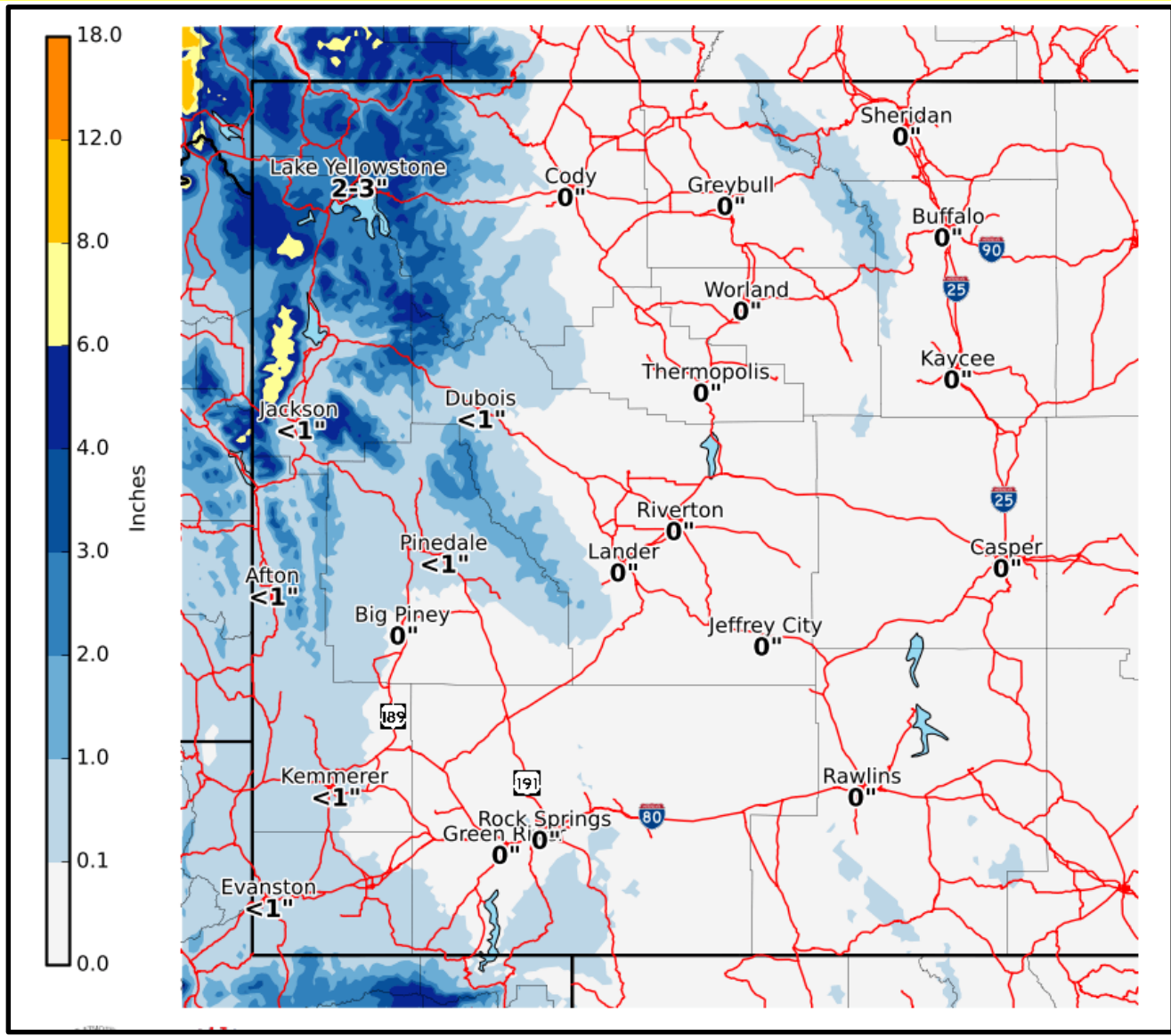


**Winter Weather Advisory** from 11 PM tonight thru Noon Monday for far northwest Wyoming. Mountain passes will be slick and hazardous Monday morning.

**Freeze Watch** tonight for the lower elevations of western Wyoming



# Forecasted Snowfall Tonight & Monday



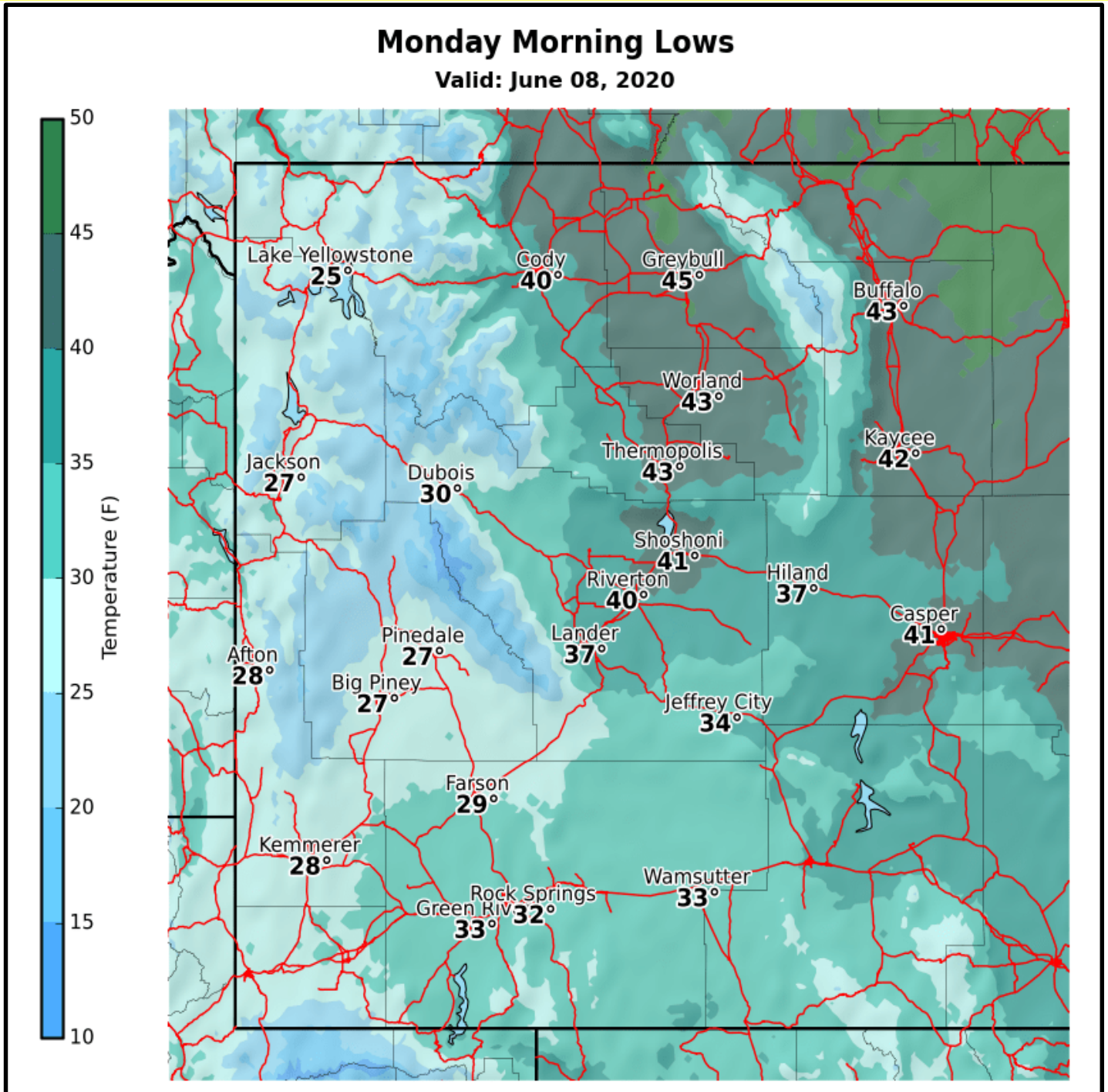
• Heaviest snowfall is expected between 4 AM and Noon Monday.



• Mountain passes (Craig, Sylvan, Teton, and Togwotee) could become slick and hazardous Monday morning



## Lows Tonight



- Sensitive plants or gardens need to be brought indoors or covered up.

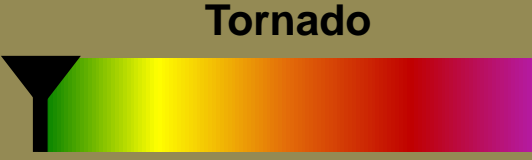


# Strong to Severe Thunderstorms Possible Today

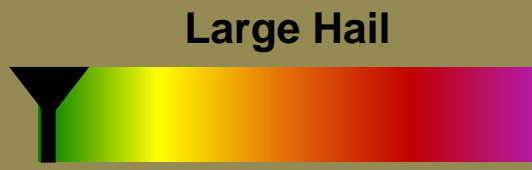
## Severe Threat Level for Today



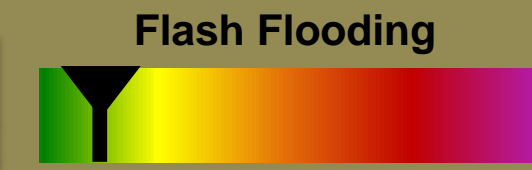
**Most at risk for severe thunderstorms:  
All of western and central Wyoming.**



Damaging winds is the greatest overall hazard.



Note: Showers or weak thundershowers have the potential to produce near severe wind gusts.



## Thunderstorm Quick Facts & Resources

- [Severe Thunderstorm](#)
- [Tornado](#)
- [Straight-Line Wind](#)
- [Large Hail](#)
- [Flash Flood](#)
- Radars: [Billings](#) | [Pocatello](#) | [Riverton](#)
- [Recent Tornado Warnings](#)
- [Recent Severe Thunderstorm Warnings](#)
- [Local Storm Reports](#)
- [Storm Prediction Center](#)

@NWSRiverton

weather.gov/riw  
1-800-211-1448

NWS Riverton



# Building a Weather-Ready Nation